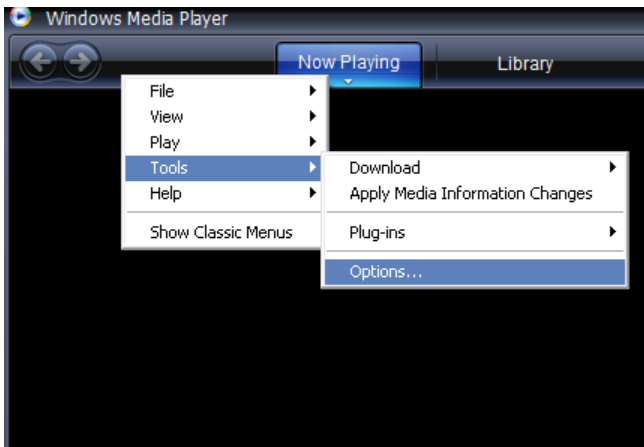
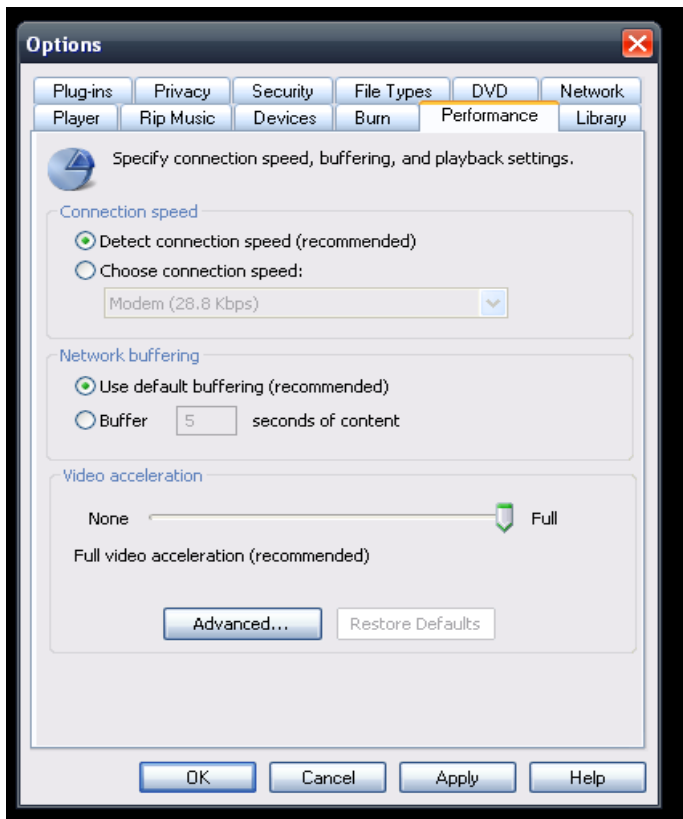


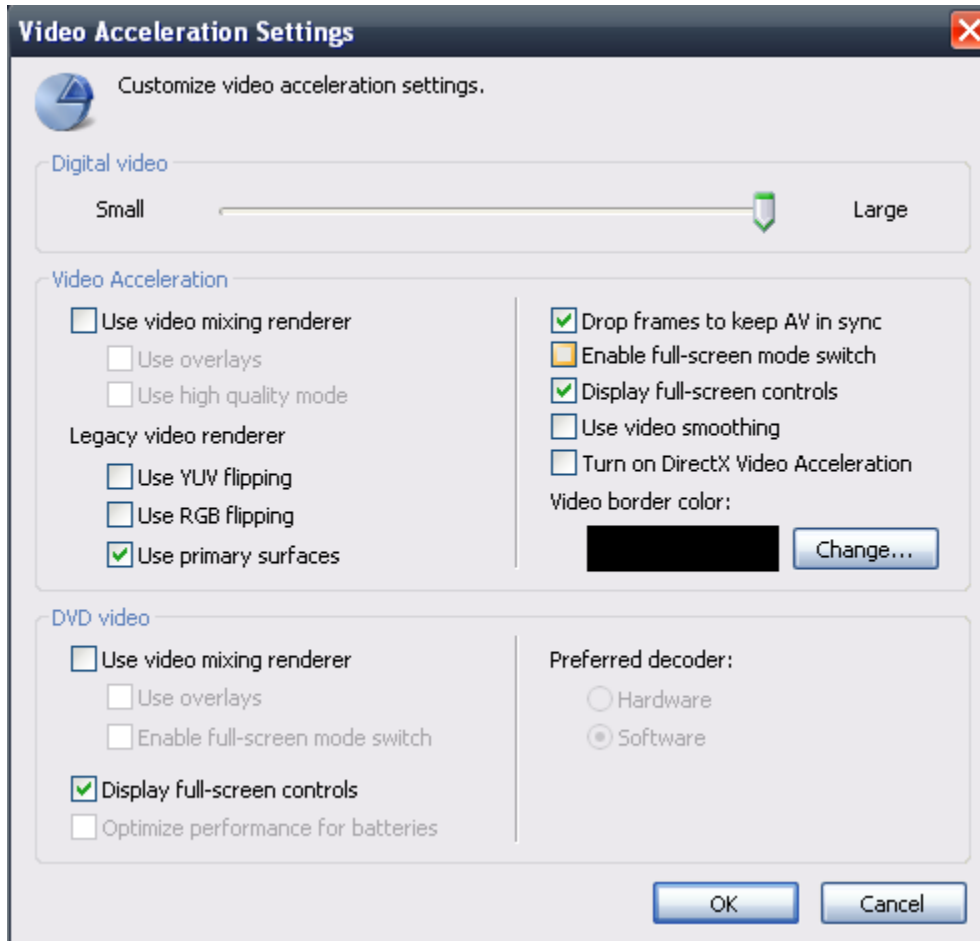
1. Open Windows Media Player.
2. Right Click on the Toolbar (somewhere left of the now-playing tab), and go to **Tools: Options**.



3. In the new window that opens, go to the performance tab and make sure the video acceleration is set to full.



- The other option is to click on the advanced button. This window (below) will open. Make sure that the **Enable full-screen mode switch** is UNCHECKED!



- Hit ok. These settings should now fix the problems with Discovery Video not going full screen.

NOTE: If none of these fix the problem, try going back to the performance tab (See step 3) and click **RESTORE DEFAULTS** button and hit ok.